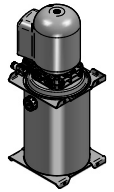
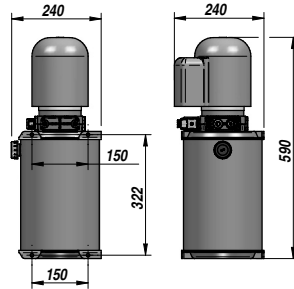
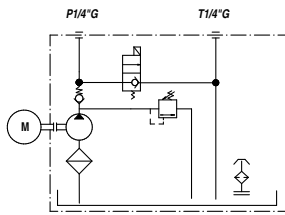


**MINICENTRALINA PER SISTEMA RIBALTABILE**  
MINI-POWER-PACK FOR TIPPER  
HYDRAULIK-MINIAGGREGATE FÜR KIPPER

**HV-2P5**

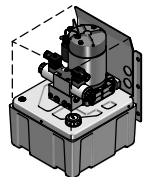
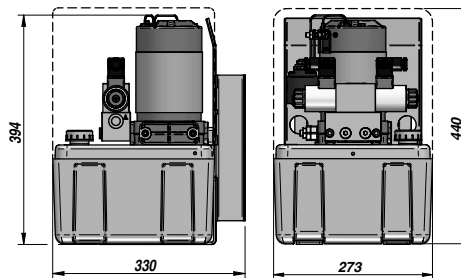
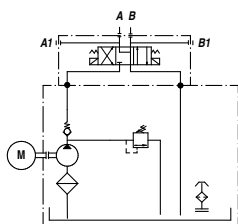


Codice Code Bestell-Nr.	Motore Motor Motor	Pompa Pump Pumpe	Elettrovalvola S.E. Solenoid Valve S.A. Magnetwegeventil E.W.	VMP RF DBV	Serbatoio - Acciaio Tank - Steel Tank - Stahl	kg
HV60EPE10G12P5	1800 W - 12 VDC	2,5 cm <sup>3</sup>	12 VDC	120 bar	lit 10	16,00

VMP = VALVOLA MASSIMA PRESSIONE - RF = RELIEF VALVE - DBV = DRUCKBEGRENZUNGSVENTIL

**MINICENTRALINA PER SISTEMA SCARRABILE**  
MINI-POWER-PACK FOR HOOKLIFT  
HYDRAULIK-MINIAGGREGATE FÜR HAKENWECHSELBAU

**HV-565**

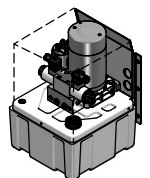
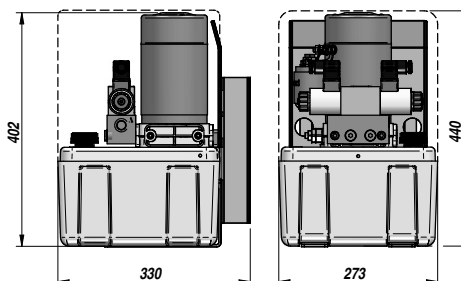
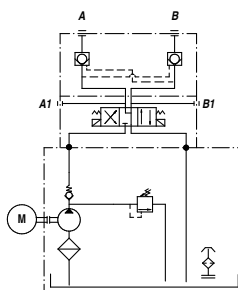


Codice Code Bestell-Nr.	Motore Motor Motor	Pompa Pump Pumpe	Elettrovalvola D.E. Solenoid Valve D.A. Magnetwegeventil D.W.	VMP RF DBV	Serbatoio - Termoplastico Tank - Thermoplastic Tank - Thermoplastisch	kg
HV600000000565	2200 W - 24 VDC	2,5 cm <sup>3</sup>	Cetop 3 - 24VDC	150 bar	lit 10	21,00

VMP = VALVOLA MASSIMA PRESSIONE - RF = RELIEF VALVE - DBV = DRUCKBEGRENZUNGSVENTIL

**MINICENTRALINA PER SISTEMA ALZACENTINA**  
MINI-POWER-PACK FOR ELEVATING ROOF SYSTEM  
HYDRAULIK-MINIAGGREGATE FÜR SPRIEGELHEBESYSTEM

**HV-39X**



Codice Code Bestell-Nr.	Motore Motor Motor	Pompa Pump Pumpe	Elettrovalvola D.E. Solenoid Valve D.A. Magnetwegeventil D.W.	VMP RF DBV	Serbatoio - Termoplastico Tank - Thermoplastic Tank - Thermoplastisch	kg
HV60000000039X	2000 W - 24 VDC	2,0 cm <sup>3</sup>	Cetop 3 - 24VDC	150 bar	lit 10	21,00

CON VALVOLA DI BLOCCO PILOTATA D.E. - WITH D.A. PILOT OPERATED CHECK VALVE - MIT D.W. VORGESTEUERTEM SPERRVENTIL

VMP = VALVOLA MASSIMA PRESSIONE - RF = RELIEF VALVE - DBV = DRUCKBEGRENZUNGSVENTIL