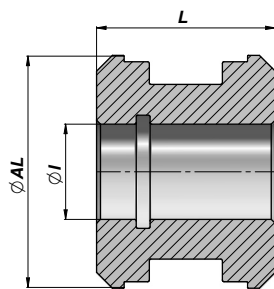


| Codice Code Bestell-Nr. | ØAL | ØS | ØD | F | LF | L | L1 | kg | Set guarnizioni Seal kits Dichtsätze |
|-------------------------|-------|-------|-------|---------------|-------|-------|-------|------|--------------------------------------|
| CGIN134112034 | 1"1/2 | 3/4" | 1.875 | 1"3/4 - 12 UN | 0.875 | 1.812 | 1.500 | 0,36 | GKGGP1120034 |
| CGIN212200118 | 2" | 1"1/8 | 2.520 | 2"1/4 - 16 UN | 0.827 | 1.875 | 1.500 | 0,55 | GKGGP2000118 |
| CGIN300212118 | 2"1/2 | 1"1/8 | 2.992 | 2"3/4 - 16 UN | 0.906 | 2.250 | 1.875 | 1,10 | GKGGP2120118 |
| CGIN300212114 | 2"1/2 | 1"1/4 | " | " | " | " | " | 1,00 | GKGGP2120114 |
| CGIN300212112 | 2"1/2 | 1"1/2 | " | " | " | " | " | 0,85 | GKGGP2120112 |
| CGIN312300112 | 3" | 1"1/2 | 3.504 | 3"1/4 - 16 UN | 1.181 | 2.300 | 1.925 | 1,50 | GKGGP3000112 |
| CGIN312300134 | 3" | 1"3/4 | " | " | " | " | " | 1,33 | GKGGP3000134 |
| CGIN400312134 | 3"1/2 | 1"3/4 | 4.016 | 3"3/4 - 12 UN | 1.260 | 2.375 | 2.000 | 2,35 | GKGGP3120134 |
| CGIN400312200 | 3"1/2 | 2" | " | " | " | " | " | 2,10 | GKGGP3120200 |
| CGIN412400200 | 4" | 2" | 4.488 | 4"1/4 - 12 UN | 1.772 | 3.250 | 2.750 | 4,00 | GKGGP4000200 |
| CGIN412400212 | 4" | 2"1/2 | " | " | " | " | " | 3,20 | GKGGP4000212 |
| CGIN558500212 | 5" | 2"1/2 | 5.669 | 5"1/4 - 12 UN | 1.969 | 3.375 | 2.875 | 6,80 | GKGGP5000212 |
| CGIN558500234 | 5" | 2"3/4 | " | " | " | " | " | 6,30 | GKGGP5000234 |
| CGIN558500300 | 5" | 3" | " | " | " | " | " | 5,80 | GKGGP5000300 |
| CGIN634600300 | 6" | 3" | 6.693 | 6"1/4 - 12 UN | 2.165 | 3.688 | 3.125 | 9,40 | GKGGP6000300 |
| CGIN634600312 | 6" | 3"1/2 | " | " | " | " | " | 8,30 | GKGGP6000312 |

MATERIALE - MATERIAL:
GHISA OLEODINAMICA - HYDRAULIC CAST IRON - HYDRAULIKGUSS UNI 5007-G25

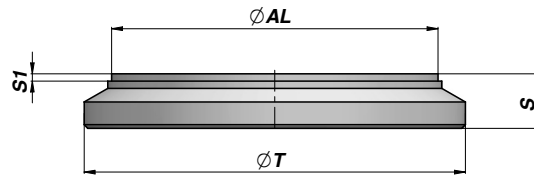
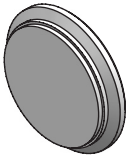
GUARNIZIONI: VEDI PAGINA 95
SEALS: SEE PAGE 95 - DICHTUNGEN: SIEHE SEITE 95



| Codice Code Bestell-Nr. | ØAL | ØI | L | kg | Set guarnizioni Seal kits Dichtsätze |
|-------------------------|-------|-------|-------|------|--------------------------------------|
| CTIN112016100 | 1"1/2 | 0.630 | 1.000 | 0,11 | GKGTP112M160 |
| CTIN200020112 | 2" | 0.787 | 1.500 | 0,30 | GKGTP200M200 |
| CTIN212020112 | 2"1/2 | 0.787 | 1.500 | 0,58 | GKGTP212M200 |
| CTIN212023112 | 2"1/2 | 0.906 | 1.500 | 0,53 | GKGTP212M230 |
| CTIN300030134 | 3" | 1.181 | 1.750 | 0,82 | GKGTP300M300 |
| CTIN312033134 | 3"1/2 | 1.299 | 1.750 | 1,20 | GKGTP312M330 |
| CTIN400033134 | 4" | 1.299 | 1.750 | 1,88 | GKGTP400M330 |
| CTIN500040200 | 5" | 1.575 | 2.188 | 3,35 | GKGTP500M400 |
| CTIN600052214 | 6" | 2.047 | 2.375 | 5,90 | GKGTP600M520 |

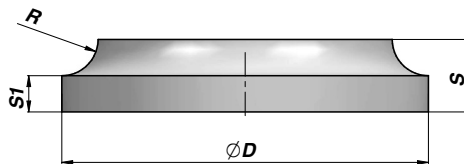
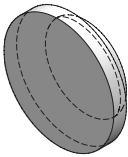
MATERIALE - MATERIAL:
ACCIAIO - STEEL - STAHL 9SMn28

GUARNIZIONI: VEDI PAGINA 95
SEALS: SEE PAGE 95 - DICHTUNGEN: SIEHE SEITE 95



| Codice Code Bestell-Nr. | ØAL | ØT | S | S1 | kg |
|-------------------------|-------|-------|-------|-------|------|
| CFIN112200012 | 1"1/2 | 1.875 | 0.500 | 0.094 | 0,15 |
| CFIN200212012 | 2" | 2.500 | 0.500 | 0.125 | 0,26 |
| CFIN212300012 | 2"1/2 | 2.963 | 0.500 | 0.125 | 0,38 |
| CFIN300312012 | 3" | 3.543 | 0.590 | 0.125 | 0,66 |
| CFIN312400034 | 3"1/2 | 3.937 | 0.690 | 0.125 | 1,00 |
| CFIN400412034 | 4" | 4.500 | 0.750 | 0.125 | 1,45 |
| CFIN500558078 | 5" | 5.709 | 0.880 | 0.125 | 2,75 |
| CFIN600634100 | 6" | 6.750 | 1.000 | 0.125 | 4,30 |

MATERIALE - MATERIAL:
ACCIAIO - STEEL - STAHL S355J0 (Fe510C) - S355JR (A105)



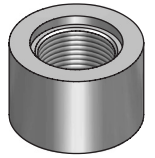
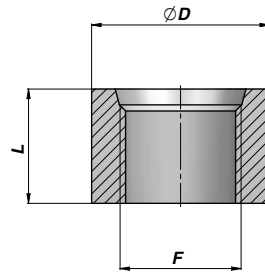
| Codice Code Bestell-Nr. | ØAL | ØD | S | S1 | R | kg |
|-------------------------|-------|-------|-------|-------|-------|------|
| CFIP012200 | 2" | 2.047 | 0.472 | 0.196 | 0.276 | 0,17 |
| CFIP015212 | 2"1/2 | 2.559 | 0.591 | 0.315 | 0.276 | 0,27 |
| CFIP015300 | 3" | 3.071 | 0.591 | 0.276 | 0.315 | 0,47 |
| CFIP017312 | 3"1/2 | 3.543 | 0.669 | 0.354 | 0.315 | 0,77 |
| CFIP020400 | 4" | 4.055 | 0.787 | 0.393 | 0.394 | 1,10 |
| CFIP023500 | 5" | 5.039 | 0.906 | 0.434 | 0.472 | 1,90 |
| CFIP025600 | 6" | 6.063 | 0.984 | 0.512 | 0.472 | 3,30 |

Ø AL = TUBO: ALESAGGIO - TUBE: BORE - ZYLINDERROHR: INNEN Ø

MATERIALE - MATERIAL:
ACCIAIO - STEEL - STAHL S355J0 (Fe510C) - S355JR (A105)

BORCHIA FILETTATA IN POLLICI
INCH THREADED PORT
ANSCHLUSSGEWINDE IN ZOLL

CBSJ

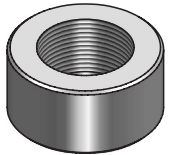
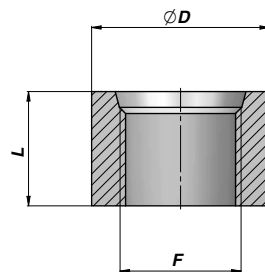


| Codice Code Bestell-Nr. | F | L | ØD | kg x 100 |
|-------------------------|---------------------|-------|-------|----------|
| CBSJ475006 | 9/16" - 18 SAE 06 | 0.708 | 0.866 | 3,50 |
| CBSJ475008 | 3/4" - 16 SAE 08 | 0.708 | 1.102 | 5,20 |
| CBSJ475012 | 1"1/16" - 12 SAE 12 | 1.023 | 1.496 | 13,00 |
| CBSJ475016 | 1"1/2" - 12 SAE 16 | 1.259 | 1.771 | 20,50 |

MATERIALE - MATERIAL: ACCIAIO - STEEL - STAHL 9SMn28

BORCHIA FILETTATA IN POLLICI
INCH THREADED PORT
ANSCHLUSSGEWINDE IN ZOLL

CBSNPT

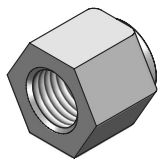
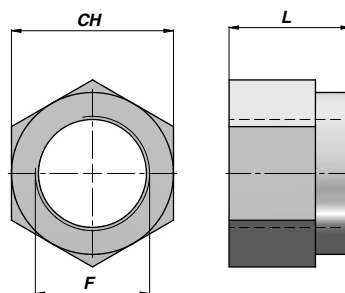


| Codice Code Bestell-Nr. | F | L | ØD | kg x 100 |
|-------------------------|----------|-------|-------|----------|
| CBSNPT0000014 | 1/4" NPT | 0.500 | 1.024 | 3,00 |
| CBSNPT0000038 | 3/8" NPT | 0.500 | 1.024 | 3,00 |
| CBSNPT0000012 | 1/2" NPT | 0.687 | 1.260 | 6,00 |
| CBSNPT0000034 | 3/4" NPT | 0.687 | 1.496 | 8,00 |

MATERIALE - MATERIAL: ACCIAIO - STEEL - STAHL 9SMn28

DADO AUTOBLOCCANTE IN POLLICI
INCH LOCKNUT
SELBSTSPERRENDE MUTTER IN ZOLL

CDAIN/CDBIN



| Codice Code Bestell-Nr. | F | L | CH | kg x 100 | Codice Code Bestell-Nr. | F | L | CH | kg x 100 |
|-------------------------|----------------|-------|-------|----------|-------------------------|----------------|-------|-------|----------|
| CDAIN00012020 | 1/2" - 20 UNF | 0.591 | 0.748 | 2,00 | CDBIN00114012 | 1"1/4 - 12 UNF | 1.102 | 1.811 | 24,00 |
| CDAIN00058018 | 5/8" - 18 UNF | 0.748 | 0.945 | 5,00 | | | | | |
| CDAIN00034016 | 3/4" - 16 UNF | 0.866 | 1.063 | 7,00 | | | | | |
| CDAIN00078014 | 7/8" - 14 UNF | 0.984 | 1.260 | 10,00 | | | | | |
| CDAIN00118012 | 1"1/8 - 12 UNF | 1.181 | 1.614 | 21,00 | | | | | |
| CDAIN00114012 | 1"1/4 - 12 UNF | 1.378 | 1.811 | 34,00 | | | | | |
| CDAIN00112012 | 1"1/2 - 12 UNF | 1.614 | 2.165 | 48,00 | | | | | |

MATERIALE - MATERIAL: ACCIAIO - STEEL - STAHL UNI 7473 - 7474